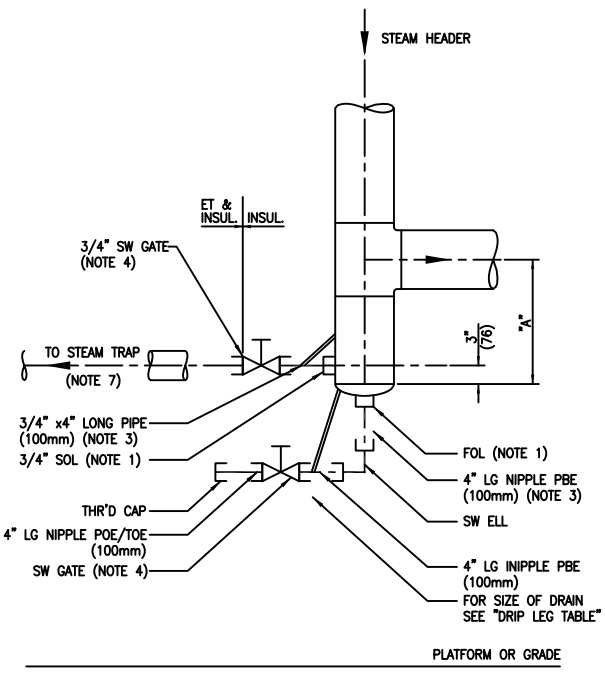
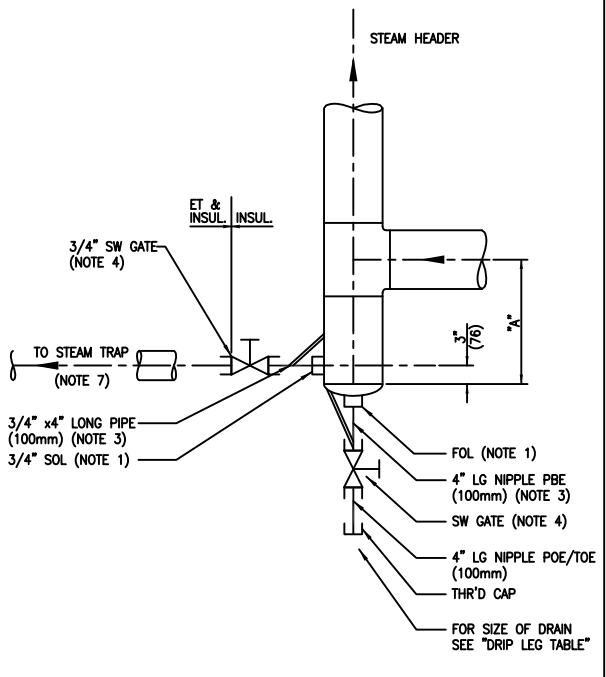


A

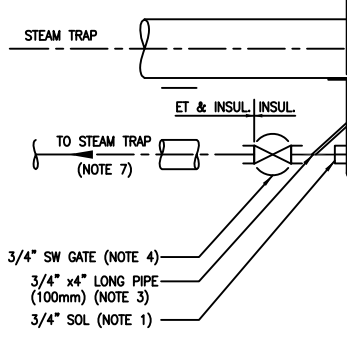
B



DETAIL ①  
DRIP LEG AT CONTROL VALVE



DETAIL ②  
DRIP LEG AT LOW POINT

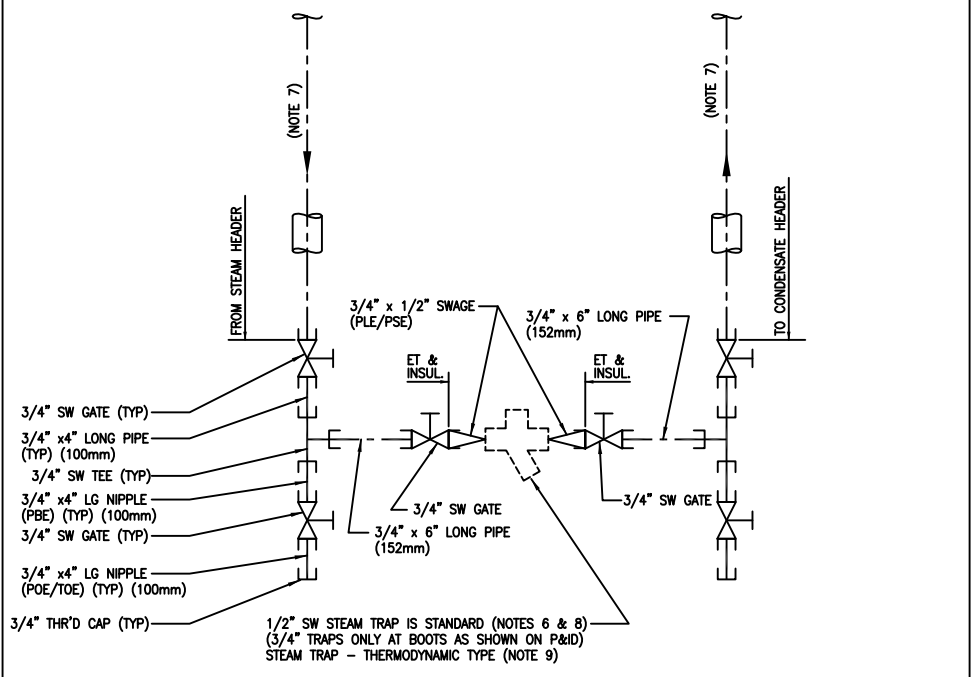


DETAIL ③  
DRIP LEG AT HORIZONTAL

C

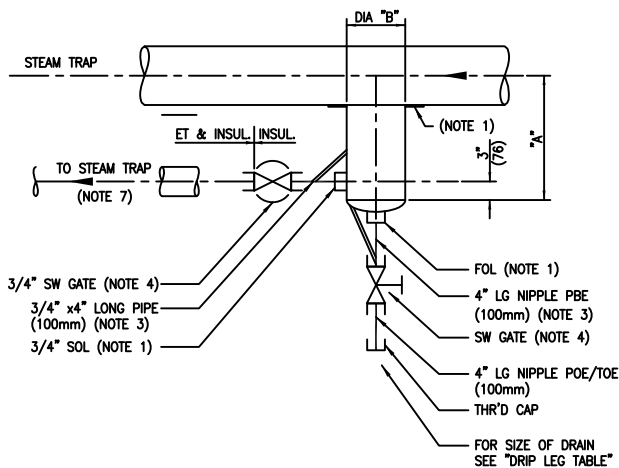
D

DRIP LEG TABLE			
SIZE OF HEADER (MAIN)	DIM "A"	DIM "B"	SIZE OF DRAIN
3"	12" (305mm)	HEADER SIZE	3/4"
4"	13" (330mm)	HEADER SIZE	3/4"
6"	14" (355mm)	4"	3/4"
8"	15" (381mm)	4"	3/4"
10"	16" (406mm)	6"	3/4"
12"	17" (430mm)	8"	1"
14"	17" (430mm)	8"	1"
16"	19" (482mm)	8"	1"
18"	20" (508mm)	10"	1 1/2"
20"	24" (609mm)	10"	1 1/2"
24"	24" (609mm)	12"	1 1/2"

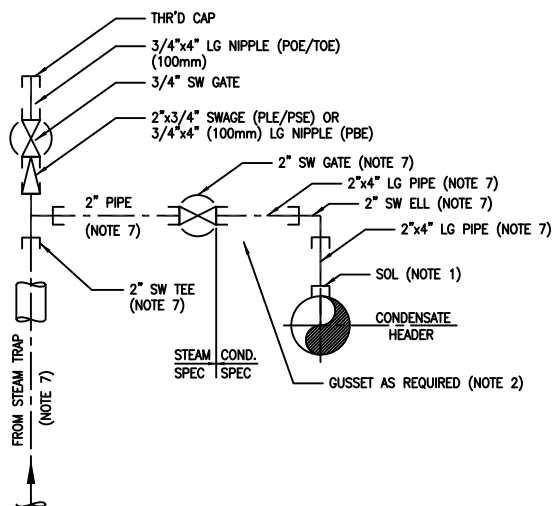


DETAIL ⑤  
STEAM TRAP ASSEMBLY 600# & 790#

DRAWING NO.	REFERENCE DRAWINGS	IMV Projects Inc.	0	ISSUED FOR CONSTRUCTION
			REV.	DESCRIPTION



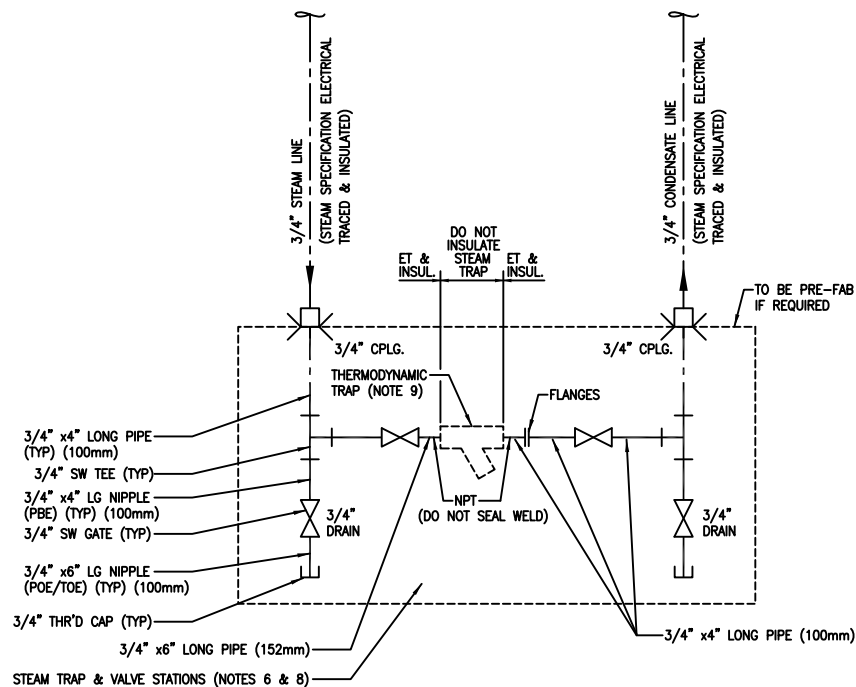
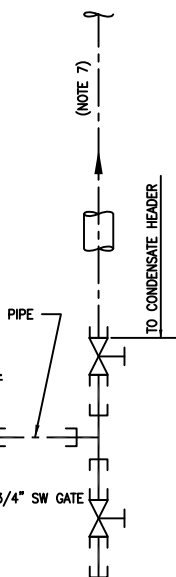
DETAIL ③  
DRIP LEG AT HORIZONTAL RUN



DETAIL ④  
CONDENSATE HEADER

### NOTES

1. ALL BRANCH CONNECTIONS TO BE AS PER PIPING LINE CLASSES.
2. ALL BRANCH CONNECTIONS 1 1/2" NPS AND SMALLER SHALL BE BRACED AS PER DWG. NO. PSD-0012.
3. WHEN PIPE INSUL IS 3" AND ABOVE USE 6" (150mm) LONG PIPE OR 6" (150mm) LONG NIPPLES.
4. DOUBLE BLOCK AND BLEED TO BE USED AS SPECIFIED
5. PIPING MATERIALS PER PIPING LINE CLASSES.
6. STEAM TRAP TO BE LEFT BARE (NO INSUL & ET).
7. USE 2" PIPE SIZE AT PIPERACKS.
8. INSULATION AND ET LIMITS TO BE INDICATED ON DRAWINGS
9. FOR STEAM TRAP SELECTION, REFER TO PIPING LINE CLASSES.
10. OWNER ENGINEERS APPROVAL REQUIRED FOR OTHER STEAM TRAP TYPES.



DETAIL ⑥  
STEAM TRAP ASSEMBLY BELOW 150#, 150# & 425#

REV.	DESCRIPTION	BY	DATE	CHK	APP.	CLIENT
0	ISSUED FOR CONSTRUCTION					

DRAWN BY:	DATE
DESIGNED BY:	DATE
CHECKED BY:	DATE
APPROVED BY:	DATE
CLIENT BY:	DATE

TITLE  
PIPING STANDARD DETAILS  
DRIP LEGS AND  
STEAM TRAP ASSEMBLIES

SCALE N.T.S.	JOB NO.	DRAWING NO. PSD-0027	REV. 0
-----------------	---------	-------------------------	-----------